

RESEARCH ARTICLE

Open Access



Genetic identification of anisakid nematodes isolated from largehead hairtail (*Trichiurus japonicus*) in Korea

Jeong-Ho Kim^{1*}, Woo-Hwa Nam¹ and Chan-Hyeok Jeon²

Abstract

Background: The nematode species belonging to genus *Anisakis* occur at their third larval stage in numerous marine teleost fish species worldwide and known to cause accidental human infection through the ingestion of raw or undercooked fish or squids. They may also draw the attention of consumers because of the visual impact of both alive and dead worms. Therefore, the information on their geographical distribution and clear species identification is important for epidemiological survey and further prevention of human infection.

Results: For identification of anisakid nematodes species isolated from largehead hairtail (*Trichiurus japonicus*), polymerase chain reaction-restriction fragment length polymorphism (PCR-RFLP) analysis of internal transcribed spacers of ribosomal DNA were conducted. Mitochondrial cytochrome c oxidase subunit 2 gene was also sequenced, and phylogenetic analysis was conducted. From the largehead hairtail ($n = 9$), 1259 nematodes were isolated in total. Most of the nematodes were found encapsulated throughout the viscera (56.2 %, 708/1259) or moving freely in the body cavity (41.5 %, 523/1259), and only 0.3 % (4/1259) was found in the muscles. By PCR-RFLP, three different nematode species were identified. *Anisakis pegreffii* was the most dominantly found (98.7 %, 1243/1259) from the largehead hairtail, occupying 98.7 % (699/708) of the nematodes in the mesenteries and 98.1 % (513/523) in the body cavity. Hybrid genotype (*Anisakis simplex* × *A. pegreffii*) occupied 0.5 %, and *Hysterothylacium* sp. occupied 0.2 % of the nematodes isolated in this study.

Conclusions: The largehead hairtail may not significantly contribute accidental human infection of anisakid nematode third stage larvae because most of the nematodes were found from the viscera or body cavity, which are not consumed raw. But, a high prevalence of anisakid nematode larvae in the largehead hairtail is still in concern because they may raise food safety problems to consumers. Immediate evisceration or freezing of fish after catch will be necessary before consumption.

Keywords: *Anisakis pegreffii*, *Hysterothylacium* sp., Largehead hairtail, *Trichiurus japonicus*, Cutlass fish

Background

Anisakid nematodes (Nematoda: Anisakidae) infect animals belonging to almost all phyla and commonly found in aquatic vertebrates. Their life cycles involve various hosts at different levels in marine food webs. Crustaceans work as the first intermediate hosts; fish and cephalopods work as intermediate or paratenic hosts and marine mammals and fish-eating birds as definitive hosts (Mattiucci and Nascetti 2008). Since Van Thiel et al. (1960) reported that

the third stage larvae (L3) of *Anisakis* from the Atlantic herring (*Clupea harengus*) can infect human, the number of clinical cases has been increasing worldwide, with the increase of knowledge about this parasite and improvement of diagnostics, as well as more globalized customs of eating raw marine fish (Cipriani et al. 2015).

The consumption of raw or undercooked fish harboring anisakid nematode L3 can lead to human infection (Audicana and Kennedy 2008). According to Fagerholm (1991), 10 genera exist in the family Anisakidae. However, the human infection is known to be caused frequently by the L3 of the genera *Anisakis* Dujardin, 1845 and less frequently by *Pseudoterranova* Krabbe, 1878

* Correspondence: jhkim70@gwnu.ac.kr

¹Department of Marine Bioscience, Gangneung-Wonju National University, Gangneung, Gangwon 210-702, South Korea

Full list of author information is available at the end of the article



(Sakanari and McKerrow 1989). Of the genus *Anisakis*, *A. simplex* sensu stricto (s.s.) and *A. pegreffii* are recognized as zoonotic species causing anisakiasis in Asia and Europe, respectively (Mattiucci et al. 2013; Umehara et al. 2007). Thus, not all the nematode larvae found in fish are infective to human, and a clear diagnosis is important for proper epidemiological survey and further prevention of human infection.

Identification of anisakid nematodes has been traditionally conducted by morphological observation, but it is not always sufficient to make a clear identification at the species level because morphological characters of taxonomic significance in this group are very few, particularly for the larval stages lacking reliable diagnostic features at the species level (Mattiucci and Nascetti 2008). Moreover, morphological identification of nematodes is not always efficient when a huge number of the specimens have to be identified or the specimens are physically damaged and the morphological keys are missed. DNA-based diagnostic techniques such as polymerase chain reaction-restriction fragment length polymorphism (PCR-RFLP) of internal transcribed spacer (ITS) region, direct sequencing of ribosomal DNA (rDNA), and mitochondrial DNA cytochrome c oxidase subunit 2 (mtDNA *cox2*) gene analysis have solved these constraints and have been widely used (Mattiucci and Nascetti 2008 and the references therein). Current taxonomy of the genus *Anisakis* based on these techniques revealed that there are two clades including nine species in this genus, and *A. simplex*, the most frequently encountered *Anisakis* species in human infection belongs to clade I (Mattiucci and Nascetti 2008).

The largehead hairtail or cutlassfish (Trichiuridae: *Trichiurus* species) distributes in circumtropical and temperate waters of the world and has been considered as one of the economically important fish species in the western North Pacific including Korea (Nakamura and Parin 1993). The annual catch of the largehead hairtail in Korea has been fluctuating between 50,000 and 90,000 t, after a sharp decrease in mid-1990 (Kim et al. 2011). Thus, importation of frozen fish from several countries has been increasing to meet the domestic demand (Cha and Kim 2009). Juveniles feed mostly on euphausiids, small pelagic planktonic crustaceans and small fishes, and adults feed mainly on fishes and occasionally on squids and crustaceans (Nakamura and Parin 1993). All of these food items are known to be the intermediate hosts of anisakid nematodes (Mattiucci and Nascetti 2008).

There have been many papers regarding anisakid nematodes isolated from *Trichiurus* species (Borges et al. 2012; Kong et al. 2015; Lee et al. 2009; Shih 2004; Umehara et al. 2010; Zhang et al. 2013). But, the identification of host species was not clearly conducted, and several scientific names (e.g., *Trichiurus lepturus*, *Trichiurus haumela*,

Trichiurus sp.) have been indiscriminately used for the largehead hairtail in their studies. However, clear identification of host species, together with the information on their geographical distribution and feeding behavior are important to understand the occurrence of anisakid nematodes and predict the likelihood of infection in a given area. In particular, the largehead hairtails are often sold as fresh or frozen fillets, which are difficult to identify since most of the morphological features are no longer available. In this case, other techniques are necessary to identify these morphologically similar and closely related species in commercial products.

Although the largehead hairtail is commercially and economically important fish species in Korea, its anisakid nematode fauna has not been clearly investigated and only fragmentary information exists. Lee et al. (2009) reported *A. pegreffii* and *Anisakis typica* from several marine fish species including *T. lepturus*, but they did neither mention the origin of the fish nor the prevalence of infection in each host fish species. Moreover, there was no information in the microhabitat of anisakid nematodes in host fish. In this study, we investigated anisakid nematode fauna from the largehead hairtail caught from Korean waters. We collected nematodes in the largehead hairtail freshly caught from coastal waters around Jeju, Korea. The host species were identified by mitochondrial DNA (mtDNA) cytochrome oxidase I (COI) gene sequencing described by Hsu et al. (2009). The collected nematodes were identified by PCR-RFLP with subsequent sequencing and mtDNA *cox2* gene sequencing, to provide information on the epidemiology of *Anisakis* infection in Korea.

Methods

Nematodes collection

Fresh largehead hairtail ($n = 9$) caught by lines were purchased from local fisheries market located in Hallim, Jeju Island, off the southern coast of the Korean Peninsula, 2015. The freshly caught fish were placed on flake ice and immediately transported to the laboratory. All of the individual fish were measured and weighed. Then, they were dissected to collect nematodes. The body cavity was longitudinally opened, and the viscera were carefully examined for collecting nematodes. The muscles were sliced, placed, and pressed between transparent glass plates, then inspected with the naked eyes under the light. All of the collected live nematodes were washed repeatedly with 0.9 % NaCl solution and preserved individually in absolute alcohol for molecular analysis. Prevalence (the number of host infected with parasites divided by the number of hosts examined) and mean intensity (the average of parasite infection among the infected hosts) were used as quantitative descriptors of the parasite population as previously described by Bush et al. (1997).

DNA extraction and PCR

Before genomic DNA extraction, the nematodes were washed three times with PBS, then placed in 1.5 ml Eppendorf tube containing 400 μ L TNES lysis buffer and crushed with a sterile pestle. Genomic DNA was extracted using the phenol-chloroform method with slight modification (Wasko et al. 2003). The extracted DNA was resuspended with 50 μ L TE buffer (10 mM Tris-HCl, pH 7.5, 1 mM EDTA). DNA concentration and purity were measured using Nanodrop 1000 (Thermo Scientific, USA). The ITS region (ITS1-5.8S-ITS2) of rDNA was amplified using primers A (forward: 5'-GTCGAATTCGTAGGTGAACCTGCGGAAGGATCA-3') and B (reverse: 5'-GCCGGATCCGAATCCTGGTTAGTTTCTTTTCCT-3') and B (D'Amelio et al. 2000). Amplification was conducted using MyCyclerTM (BioRad, USA), with the following conditions. Denaturation at 94 °C for 5 min, then 35 cycles at 94 °C for 40 s, 54 °C for 40 s, 72 °C for 90 s, and post-amplification at 72 °C for 7 min.

Digestion of PCR products with restriction enzymes

Restriction enzymes *Hinf* I, *Hha* I and *Rsa* I were used in the RFLP analysis for the amplified PCR products (D'Amelio et al. 2000). Restriction endonuclease digestion was performed using 3 μ L of PCR products, 0.5 μ L of restriction enzymes, 1 μ L of CutSmart[®] buffer (NEB, USA) and distilled water up to a final volume of 10 μ L. The digestion with these restriction enzymes was performed at 37 °C for 90 min. The digested products were analyzed by electrophoresis in 1.5 % agarose gel containing ethidium bromide and photographed using Gel Logic 100 Imaging System (Biostep, Germany).

Mitochondrial DNA *cox2* gene amplification and sequencing

For the amplification of mtDNA *cox2* gene, the primers 210 (reverse: 5'-CACCAACTCTTAAAATTATC-3') and 211 (forward: 5'-TTTCTAGTTATATA GATTGRTTYAT-3') were used (Nadler and Hudspeth 2000). After initial denaturation at 94 °C for 5 min, 35 cycles were run at 94 °C for 40 s, 48 °C for 40 s, and 72 °C for 60 s followed by post-amplification step at 72 °C for 7 min. PCR products were purified by AccuPrep[®] Gel Purification Kit (Bioneer, Korea) according to the manufacturer's instructions. 10 ng/ μ L of purified PCR products were directly sequenced by ABI

Prism 3730 XL DNA Analyzer (PE Applied Biosystems, USA).

Phylogenetic analysis

The sequence data of mtDNA *cox2* gene was aligned with the published sequences in GenBank database (NCBI) using Clustal W method (Thompson et al. 1994). The phylogenetic tree was constructed by MEGA version 6 for comparing the genetic relationship among other published sequences by the neighbor-joining criteria (Tamura et al. 2013). The nucleotide sequences were registered in GenBank.

Host identification

Genomic DNA was extracted from the muscle tissue of largehead hairtail individuals according to the methods described by Wasko et al. (2003). PCR amplification of mtDNA COI gene was conducted with the primers and conditions described by Hsu et al. (2009). PCR products were purified and sequenced by the same protocols mentioned above. The obtained sequences were aligned with other published sequences including *T. lepturus*, *T. japonicus*, and *Trichiurus* sp. registered in NCBI using Clustal W method (Thompson et al. 1994). The phylogenetic tree was constructed by MEGA version 6 for comparing the genetic relationship among other published sequences of *Trichiurus* species by the neighbor-joining criteria (Tamura et al. 2013). The nucleotide sequences were registered in GenBank.

Results

We examined nine individual largehead hairtail (mean whole body length = 90.7 \pm 5.2 cm, mean body weight = 462.0 \pm 47.3 g). All the examined individual largehead hairtail fish harbored nematodes (100 %, 9/9). In total, 1259 nematodes were found and mean intensity was 139.9 larvae/fish (1259/9). Most of the nematodes were found embedded in the surfaces of viscera including mesenteries (56.2 %, 708/1259) or existed freely in the body cavity (41.5 %, 523/1259). Two percent of nematodes were found in the intestines (0.6 %, 7/1259) or stomach (1.4 %, 17/1259). Only 0.3 % (4/1259) of nematodes was found in the muscles. All the information is summarized in Table 1.

The amplification of the rDNA region produced approximately 1 kb fragment (data not shown). PCR-RFLP analysis using *Hinf*I, *Hha*I, and *Rsa*I restriction enzymes revealed

Table 1 Infection levels of nematodes in the largehead hairtail in this study

Prevalence (%)	MI ^b	% of nematodes (number of nematodes in each microhabitat/total number of nematodes)					
		Viscera			Body cavity	Muscles	Total
		Intestines	Stomach	Mesenteries			
100.0 (9/9)	139.9 (1259/9)	0.6 (7/1259)	1.4 (17/1259)	56.2 (708/1259)	41.5 (523/1259)	0.3 (4/1259)	100 (1259/1259)

^aPrevalence of infection

^bMean intensity

different banding patterns depending on the nematode species. Digestion of the PCR product with *HinfI* produced three different patterns, i.e., 350–300–250 bp, 700–350 bp, and 620–350–300–250 bp, respectively (Fig. 2a). Digestion using *HhaI* produced two different patterns, i.e., 550–430 bp and 350–250–200–150 bp (Fig. 2b), and digestion using *RsaI* produced two different patterns, i.e., 550–300 bp and 650–220 bp, respectively (Fig. 2c). These banding patterns corresponded to the known patterns of *A. pegreffii* (lane 1, 2 in Fig. 1a–c), *Hysterothylacium* sp. (lane 3, 4 in Fig. 1a–c), and hybrid genotype (*A. simplex* × *A. pegreffii*) (lane 5, 6 in Fig. 1a–c), respectively.

Of 1259 nematodes, most of the nematodes (98.7 %, 1243/1259) were identified as *A. pegreffii*. The rest of them were identified as hybrid genotype, occupying 0.5 % (6/1259) and *Hysterothylacium* sp., occupying 0.2 % (2/1259) of the nematodes. PCR amplification was failed for eight individuals (0.6 %, 8/1259), probably due to the failure of DNA extraction. The results are summarized in Table 2. For *A. pegreffii*, 20 individuals were randomly selected and sequenced for mtDNA *cox2* gene because a huge number of samples were collected. For other species, all the individuals were sequenced. All of the samples generated 629 bp size products (data not shown). When the phylogenetic tree was constructed with the mtDNA *cox2* sequences of these samples and those previously registered in NCBI, taxonomic position of the *Anisakis* species identified in this study corresponded with the results obtained by PCR-RFLP; The mtDNA *cox2* sequences of *A. pegreffii* (Genbank accession number: KU921231-921250) were clustered with those isolated from chub mackerel in

Korea and Japan (Fig. 2), with 97.9–100.0 % homology. The mtDNA *cox2* sequences of *Hysterothylacium* sp. showed the highest homology (92.0 %) with *Hysterothylacium* sp. isolated from chub mackerel (Genbank accession number: KC633443). The mtDNA *cox2* sequences of all the hybrid genotype specimens were found to be *A. pegreffii* (data not shown).

PCR amplification and sequencing of mtDNA COI sequences from fish samples revealed that all of the nine samples produced one single band of 630 bp (data not shown). The obtained sequences (Genbank accession number: KU963588, 963589) were clustered with those of *T. japonicus* previously registered in GenBank, with 98.4–99.8 % homology (data not shown).

Discussion

Human infection with *A. simplex* L3 accidentally occur when raw or undercooked fish contaminated with the L3 is ingested. Although live L3 can rarely develop to L4 or adults in the human gastrointestinal tracts, they can cause mild to severe epigastric pain, nausea, vomiting, and diarrhea (Audicana and Kennedy 2008). In addition, allergic reactions occur in some patients, which may occur even by the ingestion of dead *A. simplex* larvae (Audicana and Kennedy 2008). In fish, the larvae are mainly located freely in the visceral cavity or encapsulated as flat, tight spirals in and on the visceral organs; however, a minor proportion may migrate into the muscles, which may draw attention of consumers (Levsen and Berland 2012). Thus, it is necessary to have knowledge about the host range of each *Anisakis*

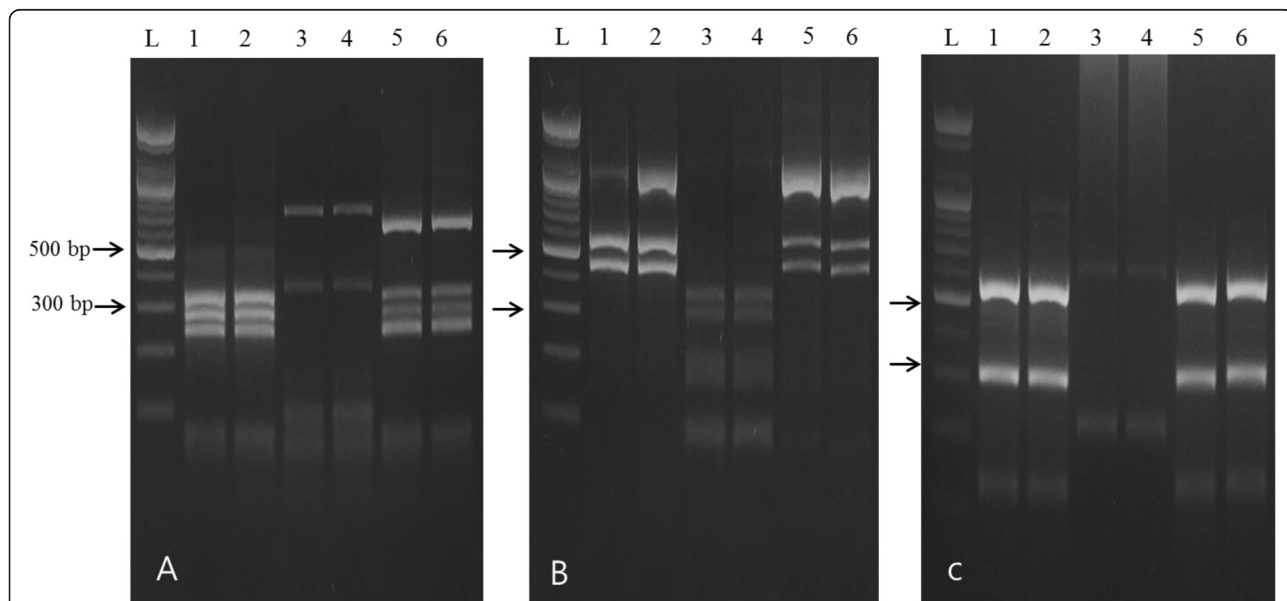


Fig. 1 PCR-RFLP profiles of the nematode species obtained by digestion of PCR products with *HinfI* (a), *HhaI* (b), and *RsaI* (c) restriction enzymes, respectively (L ladder, 1–2: *A. pegreffii*, 3–4: *Hysterothylacium* sp., 5–6: hybrid genotype)

Table 2 Anisakid nematodes assemblage of the largehead hairtail examined in this study

Microhabitat/ species name	<i>A. pegreffii</i>	Hybrid	<i>Hysterothylacium</i> sp.	Fail	Total
Viscera	Intestines	7	0	0	7
	Stomach	17	0	0	17
	Mesenteries	701	3	0	708
Body cavity	514	3	2	4	523
Muscle	4	0	0	0	4
Total	1243	6	2	8	1259

species, together with the clear identification and their geographical distribution to avoid accidental human infection and warrant food safety issue.

In this study, most of the nematodes were found throughout the viscera (56.2 %) or from the body cavity of the largehead hairtail (41.5 %) (Table 1). Those from the viscera were embedded in or stick to the surfaces of the mesenteries and intestines, whereas those from the body cavity were freely moving in the body cavity. On

the other hand, only 0.4 % (6/1,420) of the nematodes was found in the muscles.

Of 1259 nematodes, most of the nematodes (98.7 %, 1243/1259) were identified as *A. pegreffii* by PCR-RFLP and direct sequencing. Other species, *Hysterothylacium* sp. and hybrid genotype (*A. simplex* × *A. pegreffii*) were rarely found.

A. pegreffii Campana-Rouget and Biocca, 1955 is the dominant species of *Anisakis* in the Mediterranean Sea and also widely distributed in the austral region between 30° N and 55° S. Many pelagic and demersal fish species are known to be the intermediate/paratenic hosts caught in this area, and toothed whales (Delphinidae, Ziiphidae, Physteridae) and baleen whales (Neobalaenidae) are known to be the definitive hosts (Mattiucci and Nascetti 2008). *A. pegreffii* has been also reported frequently at the larval stage in many fish species in East Asian waters (Bak et al. 2014 and the references therein). Recent reports in Italy suggest that *A. pegreffii* can be the etiological agent of human infection (Mattiucci et al. 2013).

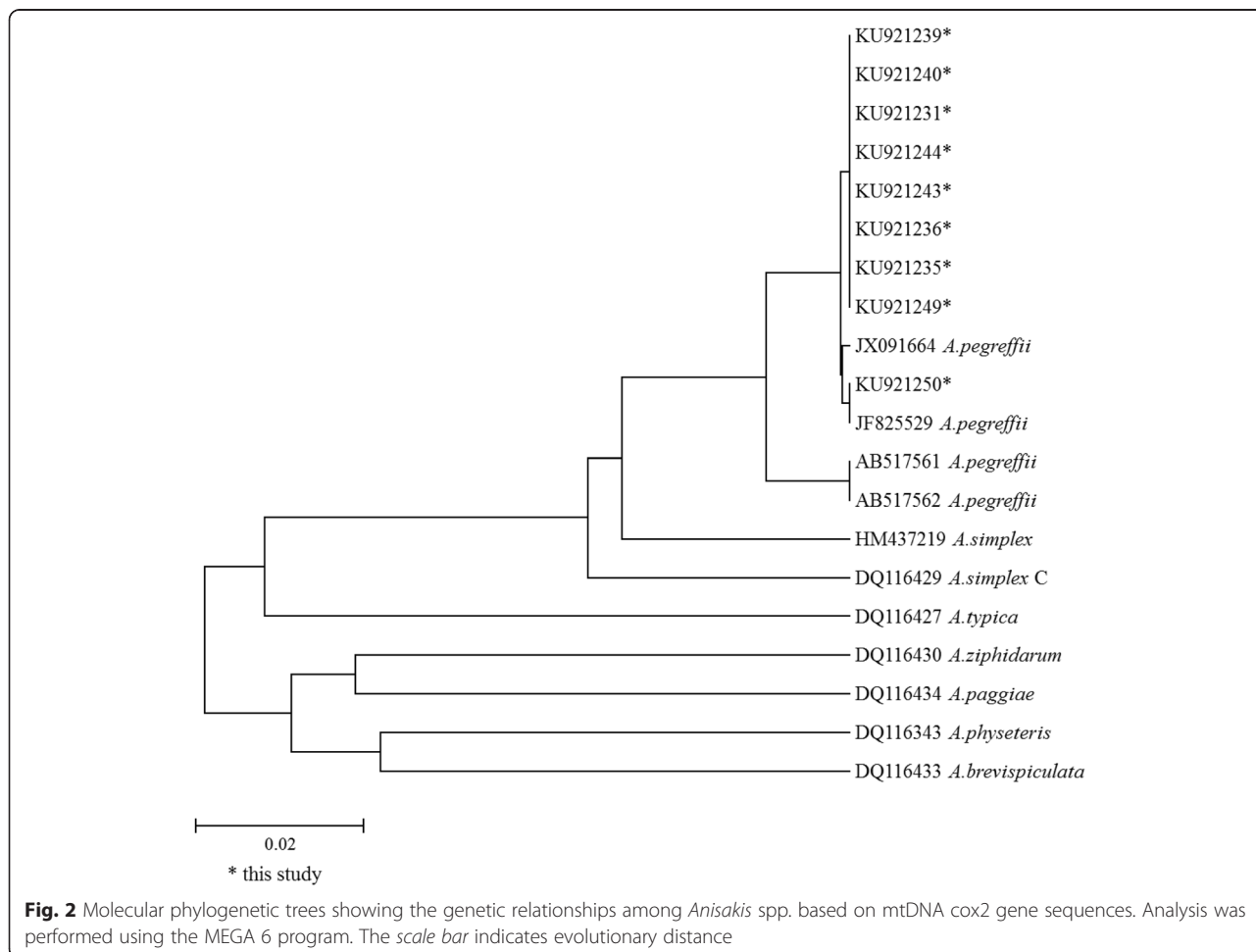


Fig. 2 Molecular phylogenetic trees showing the genetic relationships among *Anisakis* spp. based on mtDNA cox2 gene sequences. Analysis was performed using the MEGA 6 program. The scale bar indicates evolutionary distance

Genus *Hysterothylacium* Ward and Magath, 1917 is one of the common genera in the family Raphidascarididae (Fageholm 1991), in which there are approximately 70 species (Shamsi et al. 2013). The adult stages are usually found in the alimentary canal of predatory teleost, while the L3 are found encapsulated in the mesentery and viscera of various species of marine teleosts and also in various marine invertebrates (Keskin et al. 2015). Thus, it is not host specific in the larval stages, exhibiting a global distribution (Shamsi et al. 2013). Many species of the genus *Hysterothylacium* have been poorly described; thus, their genetic characteristics have been frequently deposited in Genbank without clear identification at the species level. Although the RFLP patterns in this study was in accordance with those of *Hysterothylacium* sp. described in Bak et al. (2014), we could not identify these specimens at the species level because the highest homology of the mtDNA *cox2* sequences showed 92 % with that of *Hysterothylacium* sp. registered in GenBank. It would be necessary to conduct morphological observation and further molecular analysis, for clear identification of these specimens.

The prevalence of infection and mean intensity for anisakid nematodes L3 in *T. japonicus* calculated in this study were extremely higher than those described by Lee et al. (2009). There can be several explanations for this difference. In our study, we collected freshly caught *T. japonicus* from Korean waters, whereas they collected *T. lepturus* in a fisheries market, without information on their geographical origin.

In marine food webs, the abundance of phytoplankton is strongly related to temperature and changes in phytoplankton biomass can affect all subsequent stages, first impacting on marine crustaceans, the predominant group in zooplankton abundance and biomass, and thereafter migratory fish, cephalopods, and predatory marine mammals further up the food chain (Utaaker and Robertson 2015). The life cycles of *Anisakis* species involve various hosts at different levels in marine food webs. The high prevalence of *Anisakis* species in fish hosts in this study is therefore thought to reflect the richness of micro/macroinvertebrates and possibly subsequently have relations with the biomass of other predators such as pinnipeds and cetaceans in waters investigated. Several papers also reported relatively a high prevalence of anisakid nematode larvae in the largehead hairtail (Borges et al. 2012; Kong et al. 2015; Umehara et al. 2010), as in this study. The low number of the nematode larvae in the previous study (Lee et al. 2009) may just reflect the low abundance of micro/macroinvertebrates in the areas where the largehead hairtail were caught.

Several papers described anisakid nematodes L3 from the largehead hairtail (Borges et al. 2012; Kong et al. 2015; Lee et al. 2009; Shih 2004; Umehara et al. 2010;

Zhang et al., 2013), but there was no report in which *T. japonicus* was mentioned as host species, except for our study. It is not clear if the host species mentioned was in fact *T. japonicus* or other *Trichiurus* species in their studies because the identification of host species was not clearly conducted. But except for the paper by Borges et al. (2012), they probably sampled *T. japonicus* because the known geographical distribution of *T. japonicus*, the northwestern Pacific (Hsu et al. 2009; Tzeng et al. 2007) includes their sampling areas.

After *Anisakis* L3 in the invertebrate or primary fish hosts are ingested by predatory fish, they penetrate in the intestinal wall and then may remain within the body cavity or migrate into the musculature or internal organs of the fish. The different relative abundance of these L3 among these microhabitats in fish can be affected by many factors such as the parasites species, the fish species, the fish age, and the environmental conditions (Lymbery and Cheah 2007). Although the mechanisms of larval penetration within fish hosts are still unknown, some studies revealed that L3 migrate from the visceral organs to the muscle after the death of the fish hosts and this post-mortem migration is thought to be also affected by interactions among parasites, host, and external environments (Cipriani et al. 2016; Lymbery and Cheah 2007). Thus, the risk of human infection can be enhanced if the fish are ingested whole or if the fish have been kept without evisceration for a period of time.

Several methods such as postharvest handling, freezing, and adequate cooking are suggested for prevention or control measures of the human infection by ingestion of raw or undercooked fish harboring *Anisakis* L3 (Audicana and Kennedy 2008). Deep freezing and/or adequate cooking remain the most effective measures to prevent human infection (Audicana and Kennedy 2008; Lymbery and Cheah 2007). In addition, immediate evisceration or freezing of fish after catch will be necessary for the prevention of human infection (Lymbery and Cheah 2007). In case of our study, most of the *Anisakis* L3 on the largehead hairtail was found from the body cavity and viscera, which are generally not consumed raw and removed before cooking. In addition, *A. simplex* (s.s.), the most commonly involved species in human infection, was not found in this study. Thus, the largehead hairtail may not be the common source of human infection in Korea. But care should be still taken because *A. pegreffii* is also considered as a possible human pathogen (Mattiucci et al. 2013), and a high prevalence of anisakid nematode larvae in the largehead hairtail may raise food safety problems to the consumers. Immediate evisceration or freezing of fish after catch will be necessary before consumption.

Conclusions

Information on the anisakid nematodes fauna of commercially important fish species is important because the L3 of anisakid nematodes, mostly *A. simplex*, can cause accidental human infection in countries where the customs of eating raw or undercooked fish or cephalopods exist. Given the growing popularity of these customs worldwide, the risk of human infection is widespread, together with the increased number of new host records and expansion of the geographical ranges of *Anisakis* spp. The largehead hairtail, one of the commercially important fish species in Korea, was investigated for anisakid nematodes fauna. Most of the nematodes were found throughout the viscera (58.1 %) and the body cavity (41.5 %), which is not consumed raw. Only 0.3 % was found in the muscles. *A. pegreffii* was the most frequently encountered nematode species (98.7 %) from the largehead hairtail in this study. Detailed information on the distribution of different *Anisakis* species in the largehead hairtail in this study has significant implications for the biology, ecology, and epidemiology of anisakid nematodes.

Abbreviations

COI, cytochrome c oxidase subunit 1; ITS, internal transcribed spacer; L3, third stage larvae; mtDNA cox2, mitochondrial DNA cytochrome c oxidase subunit 2; RFLP, restriction fragment length polymorphism

Acknowledgements

We thank Jeong-Ho Jang, Min-Woo Kim, Chan-Goo Kim, and Hae-Young Yun for their help during the experiments.

Funding

This research was supported by the Basic Science Research Program through the National Research Foundation of Korea (NRF) funded by the Ministry of Science, ICT, and future planning (2015R1A2A2A01004406).

Authors' contributions

JHK conceived, designed the experiments, and wrote the manuscript. WHN and CHJ carried out sample collections and analyses. JHK, WHN, and CHJ interpreted results. All authors read and approved the final manuscript.

Competing interests

The authors declare that they have no competing interests.

Author details

¹Department of Marine Bioscience, Gangneung-Wonju National University, Gangneung, Gangwon 210-702, South Korea. ²East Coast Life Science Institute, Gangneung-Wonju National University, Gangneung 210-702, South Korea.

Received: 5 April 2016 Accepted: 30 June 2016

Published online: 11 July 2016

References

- Audicana MT, Kennedy MW. *Anisakis simplex*: from obscure infectious worms to inducer of immune hypersensitivity. *Clin Microbiol Rev.* 2008;21:360–79. doi:10.1128/CMR.00012-07.
- Bak TJ, Jeon CH, Kim JH. Occurrence of anisakid nematode larvae in chub mackerel (*Scomber japonicus*) caught off Korea. *Int J Food Microbiol.* 2014; 191:149–56. doi:10.1016/j.jifoodmicro.2014.09.002.
- Borges JN, Cunha LFG, Santos HLC, Monteiro-Nato C, Santos CP. Morphological and molecular diagnosis of anisakid nematode larvae from cutlassfish (*Trichiurus lepturus*) off the coast of Rio de Janeiro, Brazil. *PLOS One.* 2012;7:e40447. doi:10.1371/journal.pone.0040447.
- Bush AO, Lafferty KD, Lotz JM, Shostak A. Parasitology meets ecology on its own terms: Margolis et al., revisited. *J Parasitol.* 1997;83:575–83. doi:10.2307/3284227.
- Cha YG, Kim KS. A causality analysis of the prices between imported fisheries and domestic fisheries in distribution channel. *J Fish Business Admin.* 2009;40:105–26 (in Korean with English summary).
- Cipriani P, Smaldone G, Acerra V, D'Angelo L, Anastasio A, Bellisario B, et al. Genetic identification and distribution of the parasitic larvae of *Anisakis pegreffii* and *Anisakis simplex* (s. s.) in European hake *Merluccius merluccius* from the Tyrrhenian Sea and Spanish Atlantic coast: implications for food safety. *Int J Food Microbiol.* 2015;198:1–8. doi:10.1016/j.jifoodmicro.2014.11.019.
- Cipriani P, Acerra V, Bellisario B, Sbaraglia GL, Cheleschi R, Nascetti G, et al. Larval migration of the zoonotic parasite *Anisakis pegreffii* (Nematoda: Anisakidae) in European anchovy, *Engraulis encrasicolus*: implications to seafood safety. *Food Control.* 2016;59:148–57. doi:10.1016/j.foodcont.2015.04.043.
- D'Amelio S, Mathiopoulos KD, Santos CP, Pugachev ON, Webb SC, Picanço M, et al. Genetic markers in ribosomal DNA for the identification of members of the genus *Anisakis* (Nematoda: ascaridoidea) defined by polymerase-chain-reaction-based restriction fragment length polymorphism. *Int J Parasitol.* 2000;30:223–6. doi:10.1016/S0020-7519(99)00178-2.
- Pageholm HP. Systematic implications of male caudal morphology in ascaridoid nematode parasites. *Syst Parasitol.* 1991;19:215–28. doi:10.1007/BF00011888.
- Hsu KC, Shih NT, Ni IH, Shao KT. Speciation and population structure of three *Trichiurus* species based on mitochondrial DNA. *Zool Studies.* 2009;48:835–49.
- Keskin E, Koyuncu CE, Genc E. Molecular identification of *Hysterothylacium aduncum* specimens isolated from commercially important fish species of Eastern Mediterranean Sea using mtDNA cox1 and ITS rDNA gene sequences. *Parasitol Int.* 2015;64:222–8. doi:10.1016/j.parint.2014.12.008.
- Kim YH, Yoo JT, Lee EH, Oh TY, Lee DW. Age and growth of largehead hairtail *Trichiurus lepturus* in the East China Sea. *Kor J Fish Aquat Sci.* 2011;44:695–700. doi:10.5657/KFAS.2011.0695 (in Korean with English Summary).
- Kong QM, Fan LF, Zhang JH, Akao N, Dong KW, Lou D, et al. Molecular identification of *Anisakis* and *Hysterothylacium* larvae in marine fishes from the East China Sea and the Pacific coast of central Japan. *Int J Food Microbiol.* 2015;199:1–7. doi:10.1016/j.jifoodmicro.2015.01.007.
- Lee MW, Cheon DS, Choi CS. Molecular genotyping of *Anisakis* species from Korean sea fish by polymerase chain reaction restriction fragment length polymorphism (PCR-RFLP). *Food Control.* 2009;20:623–6. doi:10.1016/j.foodcont.2008.09.007.
- Levens A, Berland B. *Anisakis* species. In: Woo PTK, Buchmann K, editors. Fish parasites: pathology and protection. CAB International: USA; 2012. p. 298–309.
- Lymbery AJ, Cheah FY. Anisakid nematodes and anisakiasis. In: Murrell KD, Fried B, editors. Food-borne parasitic zoonoses: fish and plant-borne parasites. New York: Springer Science; 2007. p. 185–207.
- Mattiucci M, Nascetti G. Advances and trends in the molecular systematics of anisakid nematodes, with implications for their evolutionary ecology and host-parasite co-evolutionary process. *Adv Parasitol.* 2008;66:47–148. doi:10.1016/S0065-308X(08)00202-9.
- Mattiucci M, Fazii P, De Rosa A, Paoletti M, Megna AS, Glielmo A, et al. Anisakiasis and gastroallergic reactions associated with *Anisakis pegreffii* infection, Italy. *Emerg Infect Dis.* 2013;19:196–9. doi:10.3201/eid1903.121017.
- Nadler SA, Hudspeth DSS. Phylogeny of the Ascaridoidea (Nematoda: Ascaridida) based on three genes and morphology: hypotheses of structural and sequence evolution. *J Parasitol.* 2000;86:380–93. doi:10.1645/0022-3395(2000)086[0380:POTANA]2.0.CO;2.
- Nakamura I, Parin NV. FAO Species Catalogue. Vol. 15. Snake mackerels and cutlassfishes of the world (Families Gempylidae and Trichiuridae). An annotated and illustrated catalogue of the snake mackerels, snoeks, escolars, gemfishes, sackfishes, domine, oilfish, cutlassfishes, scabbardfishes, hairtails, and frofishes known to date. FAO Fish Synop. 1993;125:99–106.
- Sakanari JA, McKerrow JH. Anisakiasis. *Clin Microbiol Rev.* 1989;2:278–84. doi:10.1128/CMR.2.3.278.
- Shamsi S, Gasser R, Beveridge I. Description and genetic characterisation of *Hysterothylacium* (Nematoda: Raphidascarididae) larvae parasitic in Australian marine fishes. *Parasitol Int.* 2013;62:320–8. doi:10.1016/j.parint.2012.10.001.
- Shih HH. Parasitic helminth fauna of the cutlass fish, *Trichiurus lepturus* L., and the differentiation of four anisakid nematode third-stage larvae by nuclear ribosomal DNA sequences. *Parasitol Res.* 2004;93:188–95. doi:10.1007/s00436-004-1095-7.
- Tamura K, Stecher G, Peterson D, Filipski A, Kumar S. MEGA6: Molecular Evolutionary Genetics Analysis Version 6.0. *Mol Biol Evol.* 2013;30:2725–9. doi:10.1093/molbev/mst197.

- Thompson JD, Higgins DG, Gibson TJ. CLUSTAL W: improving the sensitivity of progressive multiple sequence alignment through sequence weighting, position-specific gap penalties and weight matrix choice. *Nucleic Acids Res.* 1994;22:4673–80. doi:10.1093/nar/22.22.4673.
- Tzeng CH, Chen CS, Chiu TS. Analysis of morphometry and mitochondrial DNA sequences from two *Trichiurus* species in waters of the western North Pacific: taxonomic assessment and population structure. *J Fish Biol.* 2007;70(B):165–76. doi:10.1111/j.1095-8649.2007.01368.x.
- Umehara A, Kawakami Y, Araki J, Uchida A. Molecular identification of the etiological agent of the human anisakiasis in Japan. *Parasitol Int.* 2007;56: 211–5. doi:10.1016/j.parint.2007.02.005.
- Umehara A, Kawakami Y, Ooi HK, Uchida A, Ohmae H, Sugiyama H. Molecular identification of *Anisakis* type I larvae isolated from hairtail fish off the coasts of Taiwan and Japan. *Int J Food Microbiol.* 2010;143:161–5. doi:10.1016/j.ijfoodmicro.2010.08.011.
- Utaaker KS, Robertson LJ. Climate changes and food borne transmission of parasites: a consideration of possible interactions and impacts for selected parasites. *Food Res Int.* 2015;68:16–23. doi:10.1016/j.foodres.2014.06.051.
- Van Thiel PH, Kuipers FC, Roskam RT. A nematode parasitic to herring, causing atue abdominal syndromes in man. *Trop Geogr Med.* 1960;2:97–113.
- Wasko AP, Martins C, Oliveira C, Foresti F. Non-destructive genetic sampling in fish. An improved method for DNA extraction from fish fins and scales. *Hereditas.* 2003;138:161–5. doi:10.1034/j.1601-5223.2003.01503.x.
- Zhang LP, Du XJ, An RY, Li L, Gasser RB. Identification and genetic characterization of *Anisakis* larvae from marine fishes in the South China Sea using electrophoretic-guided approach. *Electrophoresis.* 2013;34:888–94. doi:10.1002/elps.201200493.

Submit your next manuscript to BioMed Central and we will help you at every step:

- We accept pre-submission inquiries
- Our selector tool helps you to find the most relevant journal
- We provide round the clock customer support
- Convenient online submission
- Thorough peer review
- Inclusion in PubMed and all major indexing services
- Maximum visibility for your research

Submit your manuscript at
www.biomedcentral.com/submit

